

**SCHOOL'S  
OUT!**

# HOP INTO AUTUMN



**AT SCHOOLSOUT! ST PATRICKS KILMORE**



**MONDAY 6 APRIL**

**EASTER  
MONDAY  
CLOSED**

**TUESDAY 7 APRIL**

**EASTER  
EXCITEMENT**

Egg Hunt  
Easter Crafts  
Easter Bonnets

**WEDNESDAY 8 APRIL**

**PLAY IN THE  
PARK**

Visiting Woodend  
Childrens Park for  
**ENDLESS FUN!**

**THURSDAY 9 APRIL**

**MARIO MOVIE  
MANIA**

The Super Mario Bros  
at United Cinemas  
Craigieburn

**FRIDAY 10 APRIL**

**2000S  
THROWBACK**

Step into the 'olden  
day' & wear your best  
early 2000s outfit

**MONDAY 13 APRIL**

**DIY MAKERS**

What can you make  
using some **SPECIAL**  
resources?

**TUESDAY 14 APRIL**

**SENSORY SCIENCE  
SPECTACULAR**

Step out of service  
and make potions,  
slime and **MORE**

**WEDNESDAY 15 APRIL**

**SPORTS STARS**

Excursion to AFL  
**MAX!** Show off your  
skills!

**THURSDAY 16 APRIL**

**FEAR FACTOR**

Will you make it  
through the  
challenges today...?

**FRIDAY 17 APRIL**

**CIRCUS  
SHOWDOWN**

Bring out your inner  
clown, acrobat or  
silliness!

**BOOKINGS OPEN 2ND MARCH**

**[schoolsout.net.au](http://schoolsout.net.au)**

**1300 329 106**



# PARENT INFO

## ST PATS KILMORE

### WEEK 1

**8TH APRIL  
PLAY IN THE PARK**

**Please arrive at service by  
9:15am for our trip to  
Woodend Childrens Park  
Your child will need a hat, and  
water.**

**9TH APRIL  
MARIO MOVIE MANIA**

**Please arrive at service by  
10:45am.  
All children will be provided  
with a movie snack pack!**

### WEEK 2

**14TH APRIL  
SENSORY SCIENCE  
SPECTACULAR**

**Please arrive at service by  
8:30am for our trip to Mount  
Macedon!  
Your child will need a hat,  
packed lunch and water.**

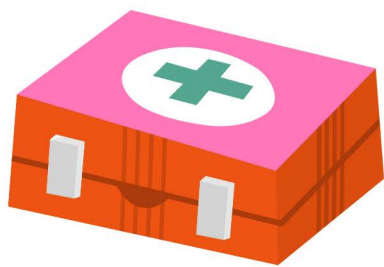
**15TH APRIL  
SPORTS STARS**

**Please arrive at service by  
8:30am for our trip to AFL  
MAX!  
Your child will need closed toe  
shoes, a packed lunch and  
water.**

## WHAT TO BRING



**A SUNSMART  
HAT!**



**ANY REQUIRED  
MEDICATION**



**A WATER  
BOTTLE**

**SCHOOL'S  
OUT!**

# HOP INTO AUTUMN



## SCHOOLSOUT! ST PATS KILMORE PRICING

 MONDAY 6 APRIL	TUESDAY 7 APRIL 	WEDNESDAY 8 APRIL 	THURSDAY 9 APRIL 	FRIDAY 10 APRIL 
<b>EASTER MONDAY CLOSED</b>	<b>\$90</b>	<b>\$106</b>	<b>\$134</b>	<b>\$90</b>
MONDAY 13 APRIL 	TUESDAY 14 APRIL 	WEDNESDAY 15 APRIL 	THURSDAY 16 APRIL 	FRIDAY 17 APRIL 
<b>\$90</b>	<b>\$119</b>	<b>\$133</b>	<b>\$90</b>	<b>\$90</b>

**BOOKINGS OPEN 2ND MARCH**  
**[schoolsout.net.au](http://schoolsout.net.au) OR 1300 329 106**

**CCS APPROVED SERVICE** 

